

Excel[®]

Stairway Lift

Unit Dimensional Drawing

STANDARDSPECIFICATIONS

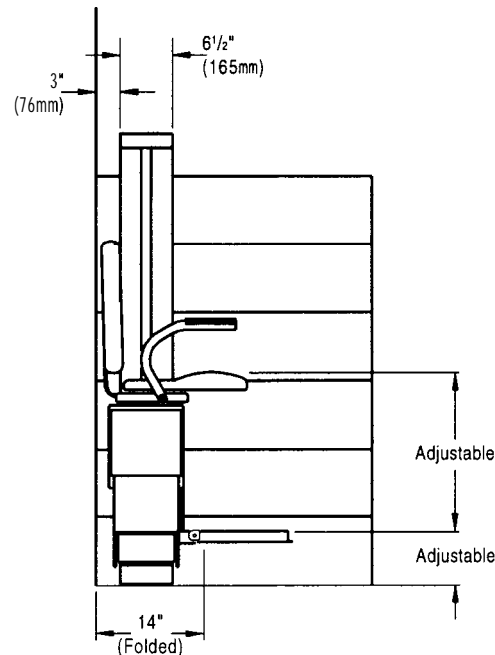
Rated Load: 300 pounds (135kg).
 Speed: 18 fpm (.09 ms).
 Travel: 32' max. (9.75 m).
 Power Supply: 120 VAC, 15 AMP.
 Control Voltage: 24 VAC.
 Incline limits: 25° to 45°.
 U.L. Listed

STANDARD EQUIPMENT

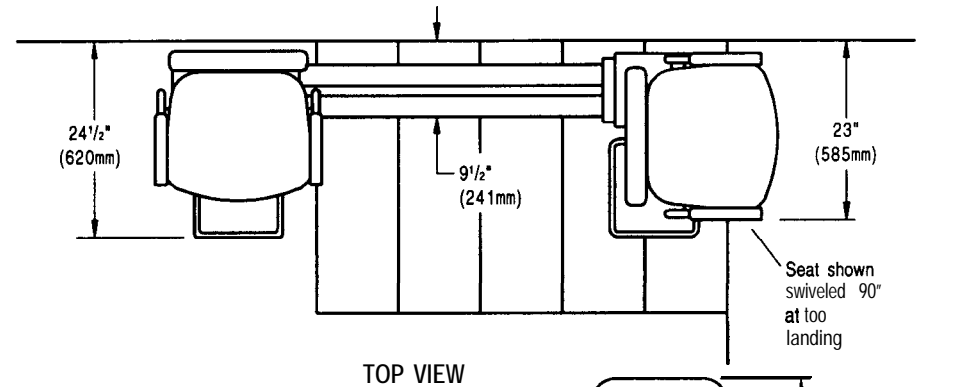
Motor: 1/2 hp, 120 VDC60Hz (reversible).
 Drive System: Rack and pinion.
 Brake: Self-locking worm gear.
 Track: 6 1/2" (165mm) extruded aluminum.
 Track and Unit Finish: Ivory white powder coat finish.
 Upholstery: Taupe or misty gray vinyl or mauve or oatmeal fabric.
 Seat: 19" (483mm) wide seat cushion with two arms, seat belt, and 90° locking swivel seat at top landing.
 Controls: Constant pressure up-down controls on seat and Call/Send controls at top and bottom landings.
 Safety Devices:
 Carriage obstruction sensor.
 Footrest obstruction sensor.
 Swivel seat cut-off switch.

OPTIONALEQUIPMENT

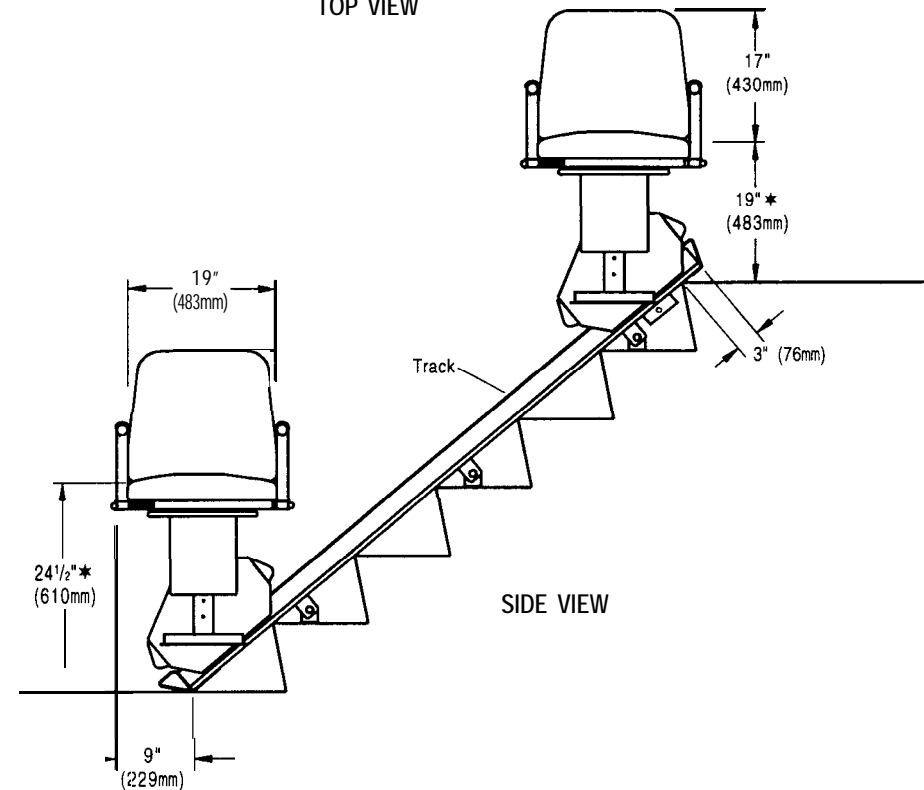
BOS Feature
 1/2 hp Motor, 24 VDC.
 Two 12 Volt Maintenance Free Batteries
 "Smart Charge" Battery Charger
 Key switch on Call/Send and unit controls.
 Manual folding track at lower landing.
 Overspeed brake.
 Manual lowering device (handcrank).
 Public building package (key switch on Call/Send and unit controls, overspeed brake and two operation plaques).



END VIEW



TOP VIEW



SIDE VIEW



* Dimensions are based on standard seat heights with a 3" (76mm) top track extension. The seat height at the lower landing can be adjusted by the dealer to heights of 22" (559mm) or 20" (508mm). See Measurement Sheet - Order Form for details on the track extension based on desired seat heights at the upper and lower landings.